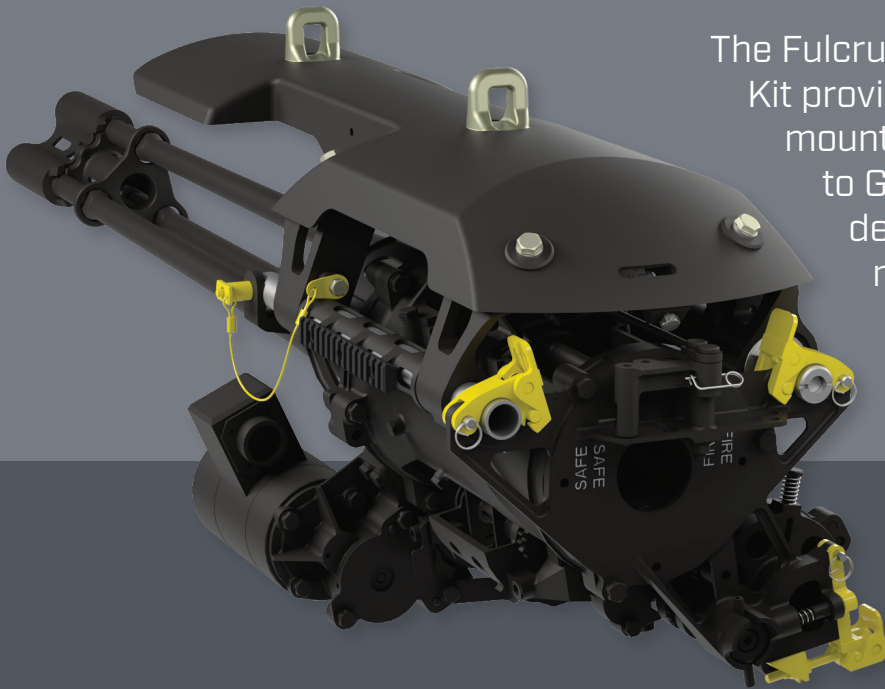


GAU-19 LATCH KIT



The Fulcrum Concepts GAU-19 A/B Latch Kit provides armament personnel a quick mount/dismount capability for the GAU-19 to Gun Cradle, and the powered feeder de-linker to gun. The kit eliminates all non-captive hardware and simplifies the gun to cradle and feeder to gun installation by utilizing “slam-closed” design latches.

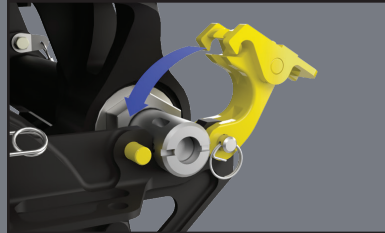
◀ **Kit Consists of:**

4 titanium latches, 2 stainless steel P-lock quick release pins with captive lanyard, and all the associated pins and hardware

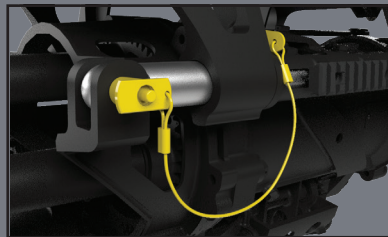
INTRODUCING YOUR NEW HELPING HAND...

Compatible with:

GAU-19/A
GAU-19/B



Easy one-handed operation with slam-closed design



All hardware remains captive



◀ **Latch Kit Press Pin Tools**

Required for correct installation of the Latch Kit.
Sold separately.

Upgrade Service Available

Contact us to improve your GAU-19 A/B with Fulcrum's enhancements.

000060PFS_619LK_A