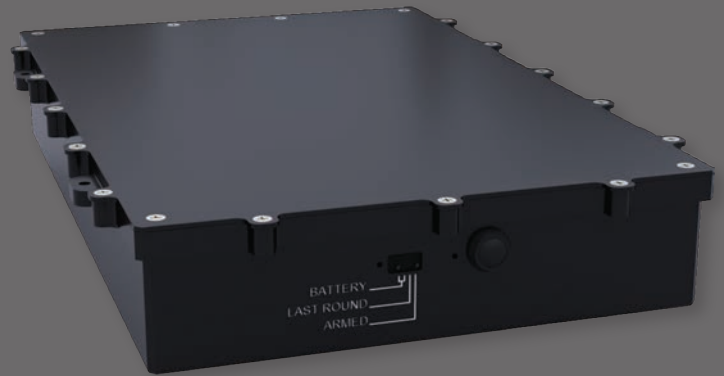


# GUN CONTROL BATTERY UNIT

The Gun Control Battery Unit (GCBU) is a self-contained energy source and gun control system. It has been designed to be a completely federated system that can power and operate a wide variety of 24-28Vdc gun systems.

The GCBU is energized by either applying a charge input or routing the standby output from the GCBU through a switch in the host back to the GCBU standby input. After energizing the GCBU only an ARM and Trigger input are required to operate the gun system.



## POWER ON ANY PLATFORM

### SWaP

#### Chassis Size

15.2" x 10.1" x 2.3"

#### System Weight

13.5 lbs

#### Operating Voltage

23-32V

#### Capacity Rating

7Ah

#### Discharge Rate

Max Peak Current  
350A,  
100A Continuous

- ▶ Provides optional 28Vdc output for ammunition booster motor
- ▶ Contains built-in options for add'l platform safeties
- ▶ Draws a max of 3 Amps at 28 VDC (when charge signal is supplied)
- ▶ Requires only ARM and Trigger input to operate the gun system after energizing
- ▶ Li-Ion battery is designed for superior safety and abuse tolerance
- ▶ Battery Management Unit (BMU) circuits control charge/discharge limits and overall safety of the system
- ▶ Battery Safety Protection circuitry provides firmware monitoring of the pack voltage and current levels and can disconnect the pack from the external load or charger to prevent critical failure by shutting off the primary control FETs
- ▶ Maintenance-free battery can be stored fully charged on the shelf for a year without maintenance service.